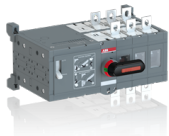




 PRODUCT-DETAILS

OTM200E3CM230C

OTM200E3CM230C MOTORIZED C/O SWITCH



General Information

Extended Product Type	OTM200E3CM230C
Product ID	1SCA022845R8960
EAN	6417019296548
Catalog Description	OTM200E3CM230C MOTORIZED C/O SWITCH
Long Description	Including a handle for manual operation, bolt kit with nut and washers for all terminals and male connectors for control circuits. Include a storage clip for the handle and spare fuses.

Circular Value

End of Life Instructions	1SCC303057M0201
Environmental Information	1SCC303036D0202

Material Compliance

Conflict Minerals Reporting Template	9AKK108467A5658
--------------------------------------	-----------------

(CMRT)

REACH Declaration	1SCC011021D0201
RoHS Information	1SCC011020D0201
RoHS Status	Following EU Directive 2011/65/EU and Amendment 2015/863 July 22, 2019

Ordering

Minimum Order Quantity	1 piece
Customs Tariff Number	85365080
Country of Origin	Finland (FI)

Popular Downloads

Data Sheet, Technical Information	1SCC303003C0201
Instructions and Manuals	1SCC303002M0206
End of Life Instructions	1SCC303057M0201

Dimensions

Product Net Width	273 mm
Product Net Height	150 mm
Product Net Depth / Length	197 mm
Product Net Weight	5.6 kg

Technical

Rated Operational Current AC-21A (I _e)	(380 ... 415 V) 200 A (500 V) 200 A (690 V) 200 A
Rated Operational Current AC-22A (I _e)	(380 ... 415 V) 200 A (500 V) 200 A (690 V) 200 A
Rated Operational Current AC-23A (I _e)	(380 ... 415 V) 200 A (500 V) 200 A (690 V) 200 A
Rated Operational Current AC-31B (I _e)	(380 ... 415 V) 200 A
Rated Operational Current AC-33B (I _e)	(380 ... 415 V) 200 A
Rated Operational Power AC-23A (P _e)	(380 ... 415 V) 110 kW (500 V) 132 kW (690 V) 200 kW
Conventional Free-air Thermal Current (I _{th})	Θ = 40 °C 200 A
Conventional Thermal Current (I _{the})	Fully Enclosed 200 A
Rated Impulse Withstand Voltage (U _{imp})	12 kV
Rated Insulation Voltage (U _i)	1000 V
Rated Operational Voltage	1000 V
Rated Short-time	for 1 s 8 kiloampere rms

Withstand Current Low Voltage (I_{cw})	
Motor Operational Voltage	220 ... 240 V AC
Power Loss	4 W
Pollution Degree	3
Handle Color	Black
Handle Type	Direct mounted handle
Switches Operating Mechanism	Mechanism at the End of the Switch
Distance Between Phases	Standard
Position of Line Terminals	Top In - Bottom Out, Bottom In - Top Out
Operating Mode	Front operated
Mounting Type	Base mounting
Number of Poles	3
Degree of Protection	Front IP20
Transition Type	Open

Environmental

Environmental Information	1SCC303036D0202
---------------------------	-----------------

Certificates and Declarations

Declaration of Conformity - CE	1SCC303012D0202
--------------------------------	-----------------

Container Information

Package Level 1 Units	1 piece
Package Level 1 Width	215 mm
Package Level 1 Depth / Length	395 mm
Package Level 1 Height	215 mm
Package Level 1 Gross Weight	6.9 kg
Package Level 1 EAN	6417019296548

Classifications

Object Classification Code	Q
ETIM 8	EC000216 - Switch disconnecter
ETIM 9	EC000216 - Switch disconnecter (low voltage)
eClass	V11.1 : 27371403
WEEE Category	5. Small Equipment (No External Dimension More Than 50 cm)
E-Number (Finland)	3641712

Categories

Low Voltage Products and Systems → Switches → Change-over and Transfer Switches → Motorized Change-over Switches

